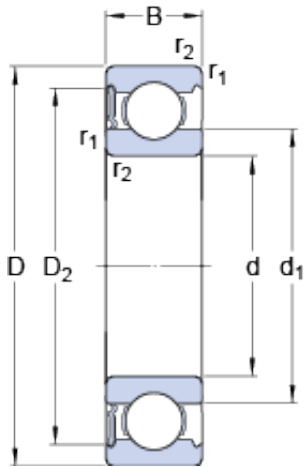




BEARING MFG. CORP.



75 mm x 130 mm x 25 mm 22312
 YMW33W800C4 Vibrating Screen Bearing
 60x130x46mm

Bearing No. 6215-RS1

6215-RS1 Bearing 2D drawings and 3D CAD models

Size	130x75x25 mm
Bore Diameter	130 mm
Outer Diameter	75 mm
Width	25 mm
d	75 mm
D	130 mm
B	25 mm
d ₁	92.05 mm
D ₂	116.5 mm
r _{1,2} - min.	1.5 mm
d _a - min.	84 mm
d _a - max.	92 mm
D _a - max.	121 mm
r _a - max.	1.5 mm
Basic dynamic load rating - C	68.9 kN
Basic static load rating - C ₀	49 kN
Fatigue load limit - P _u	2 kN
Limiting speed	3200 r/min
Calculation factor - k _r	0.025
Calculation factor - f ₀	14.7
Category	Single Row Ball Bearings
Inventory	0.0
Manufacturer Name	SKF



BEARING MFG.CORP.

Minimum Buy Quantity	N/A
Weight / Kilogram	1.213
Product Group	B00308
Enclosure	1 Seal
Precision Class	ABEC 1 ISO P0
Maximum Capacity / Filling Slot	No
Rolling Element	Ball Bearing
Snap Ring	No
Internal Special Features	No
Cage Material	Steel
Enclosure Type	Contact Seal
Internal Clearance	C0-Medium
Inch - Metric	Metric
Long Description	75MM Bore; 130MM Outside Diameter; 25MM Outer Race Diameter; 1 Seal; Ball Bearing; ABEC 1 ISO P0; No Filling Slot; No Snap Ring; No Internal Special Features
Category	Single Row Ball Bearing
UNSPSC	31171504
Harmonized Tariff Code	8482.10.50.68
Noun	Bearing
Keyword String	Ball
Manufacturer URL	http://www.skf.com
Manufacturer Item Number	6215-RS1
Weight / LBS	2.67
Outside Diameter	5.118 Inch 130 Millimeter
Bore	2.953 Inch 75 Millimeter
Outer Race Width	0.984 Inch 25 Millimeter
d ₁	92.05 mm
D ₂	116.5 mm



BEARING MFG.CORP.

$r_{1,2}$ min.	1.5 mm
d_a min.	84 mm
d_a max.	92 mm
D_a max.	121 mm
r_a max.	1.5 mm
Basic dynamic load rating C	68.9 kN
Basic static load rating C_0	49 kN
Fatigue load limit P_u	2.04 kN
Calculation factor k_r	0.025
Calculation factor f_0	14.7
Mass bearing	1.98 kg